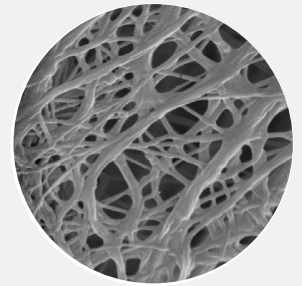


CelGro™ Dental

guided bone and tissue regeneration



more than a barrier membrane



Proven biocompatibility

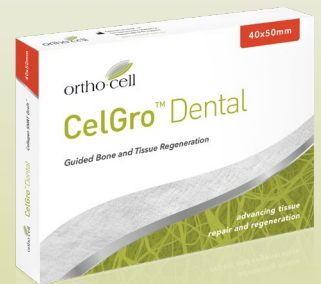
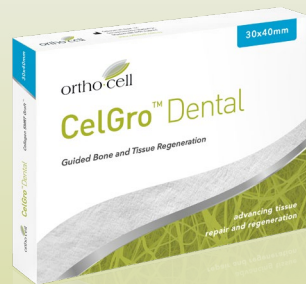
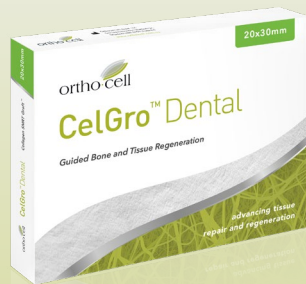
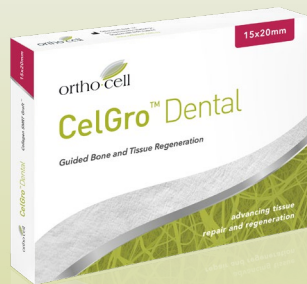
Pure, acellular collagen membrane, with optimal integration profile

Exceptional handling properties

Flexible and easy to handle even when wet and can be used with or without pins and sutures

Optimal tissue integration and remodeling

Provides a favourable environment to promote rapid bone regeneration and high-quality tissue repair



Each unit contains one resorbable collagen barrier membrane intended for use in guided bone and tissue regeneration

